

Mix, match, rebuild and repeat

Flexibility is key to the Layer concept and its modular design makes it easy to assemble and reconfigure, enabling the desk to be moved, modified and adapted to suit all environments and for components to be easily replaced when needed. Individual panels are easily fixed into place onto a versatile desk frame that can house drawers, cupboards and other functional elements. Dressed in a wide range of materials, creating endless design options.

Layer's combination of a practical, modular and aesthetically versatile design make it a key step in Isomi's ambitions to develop and implement more sustainable methods of design and production, as well as further the company's ongoing exploration into different materials.

Dress to impress

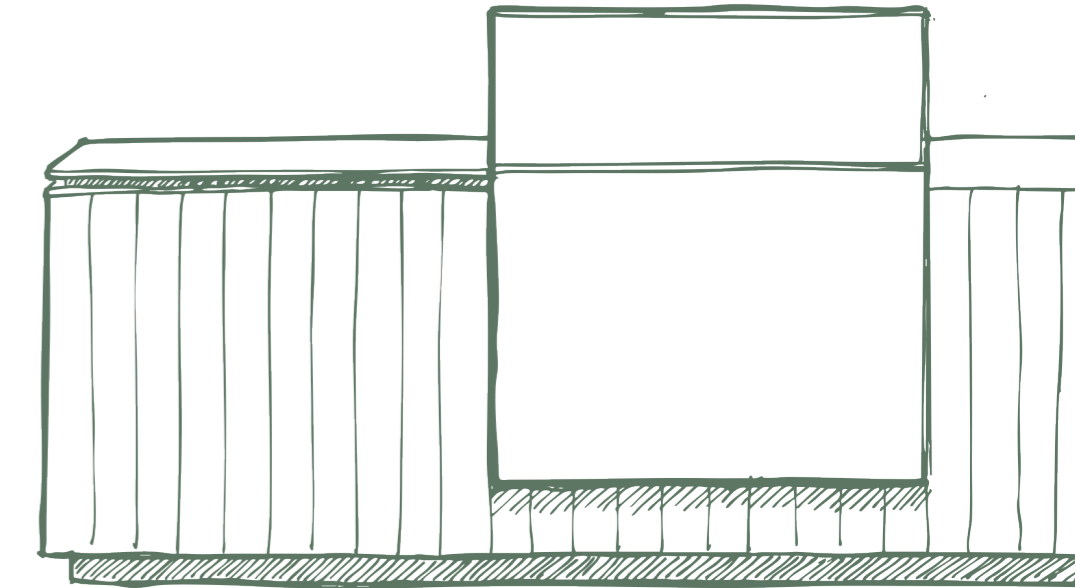
Layer is Isomi's most aesthetically versatile product to date, suited to a number of settings, from office and retail spaces to hospitality and healthcare. This system allows users to update the desk's aesthetics with new materials, allowing seamless integration into various design schemes. This modularity extends beyond its interchangeable panels.

Users can choose from a diverse range of materials, catering to both functional and aesthetic preferences. Wood finishes for a natural aesthetic, tiles for a more imposing presence, and metals for a luxurious or industrial look. Classic solid surface comes in a variety of colours, while sustainable fabrics provide an environmentally conscious choice.

Designed for modularity

Layer

isomi.com



isomi®

Isomi has built a reputation for creating pioneering bespoke modular furniture systems from standardised off-the-shelf components. Layer pushes this even further; taking the modularity that has been central to Isomi since its inception and marking another significant step towards more sustainable manufacturing.



The Layer system prioritises adaptability and sustainability with its reusable desk framework and replaceable panels. Its innovative, modular design allows users to swap out the panels to refresh the desk's appearance without discarding the main structure, reducing waste and extending the desk's lifespan.

